



## Building Hydrogen Stations

What could possibly go wrong?

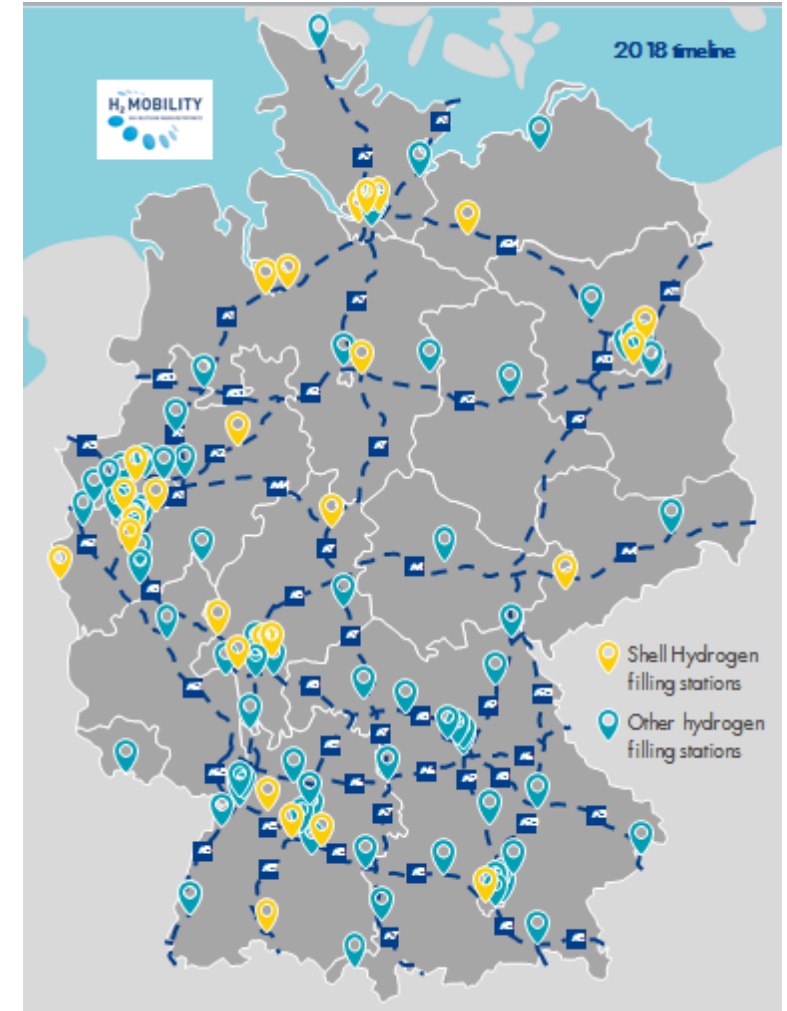
**Alice Elliott**

NL Energy Transition

# Existing Shell hydrogen infrastructure

Germany, California, UK

- Over 15 years' experience
- Wide range of station types
  - LH2/GH2 supply
  - Pipeline / tanker delivery
  - On-site manufacture
  - 350bar/700bar
- Different suppliers and operators
- Excellent safety record



# HRS Construction – Ensuring safe, timely and cost-effective delivery

Issues, barriers and problems encountered

- Station design and safety – is QRA the best solution?
  - A hydrogen station ≠ a complex industrial site
- Risk management should be fit for purpose
  - Lack of certification ≠ lack of safety
- Zoning and regulations: couldn't they be uniform?
  - Wide variations between different countries, regions (*Bundesländer*) and even cities
- Local legislation on non-hydrogen topics also highly influential
  - How are electrical networks managed?

